

### description

Integrated bridge control system is new generation of bridge control system, which was the latest developed by SECORP. Adopt multi-touch, overturn t-radition operating Habits, lead new bridge control ideal.



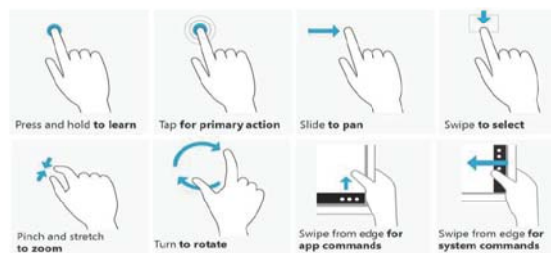
### product features

- Safe And Redundant

Integrated bridge system is equipped standby operating units. When the touch screen is in trouble, the crew can use standby operating units, which are installed in the driving console. In order to control the auxiliary equipment and make double safety protection.

- Product Interactive

More multi-touch technology, realize the convenience of operators, identify operators' intention through their gesture, stop the inconvenience of mouse, keyboard and single touch across the scene. Improve work efficiency of the field operator.



- Integrated packaging capacity, high integrated, save installation space.

Integrated bridge system will integrate traditional decentralized bridge auxiliary system in one control system. The crew can control various bridge auxiliary equipment quickly and conveniently, specific information is as follows:



Navigation/Signal light controller



Fog horn controller



navigation chair



electric visor curtain



Bridge Navigational Watch Alarm System



Clear View Screen



Glass Heater



Watertight door control



Universal Monitoring System

- Expansion ability

SECORP integrated bridge system can add main propulsion control system and marine video surveillance system according to customer' s requirements.

Coordinate driving console of SECORP,customization design can meet operating features of different ships and users' operating habits.



More Information,  
Please Scan Qr Code

